

# **Middle Level Education Research SIG Survey**

**Micki M. Caskey  
Kathleen Roney  
with the  
Executive Council**

**April 13, 2005  
AERA Annual Meeting  
Montreal**

# **Purposes of the MLER SIG Survey**

- 1. gain a better understanding of how the SIG is viewed by its members,**
- 2. get members' opinions about various SIG activities, and**
- 3. determine options for enhancing involvement in the SIG.**

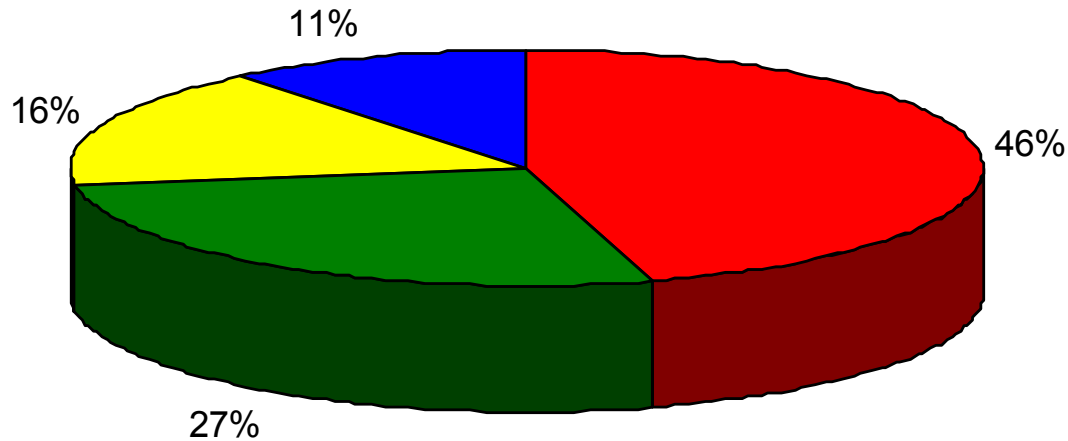
# Methods





- **Created the 10 item MLER survey with Web Surveyor, an online tool**
- **Sent an invitation to respond to the survey via the MLER listserv (137 members)**
- **Posted the MLER Survey for 2 weeks**
- **n = 56 anonymous responses (41% response rate)**

# Results of Analysis

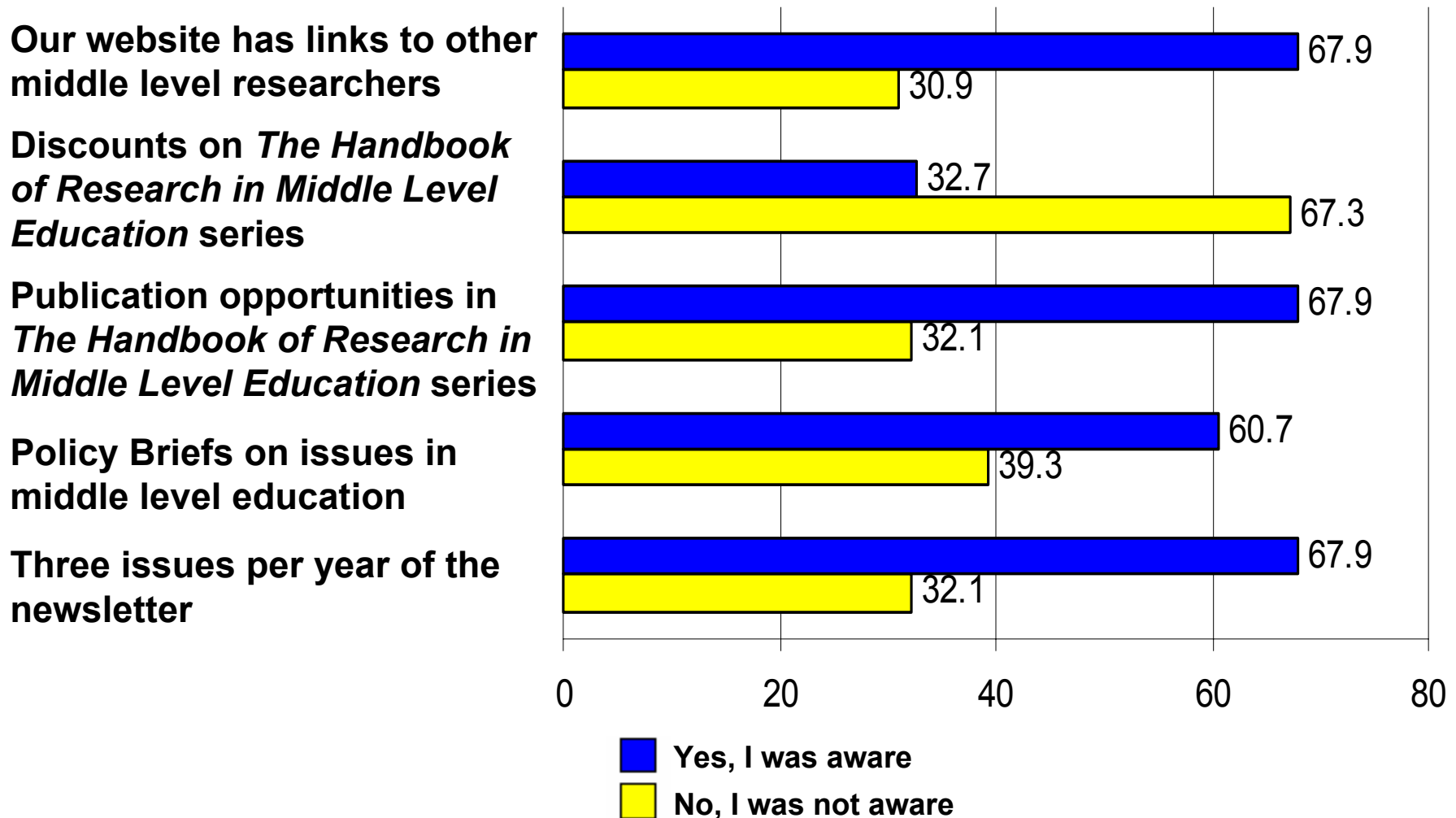
- **Quantitative data displayed in charts and tables**
- **Qualitative data presented in brief summaries**
  - **Includes representative quotes from respondents**

# Familiarity with activities sponsored by the MLER SIG

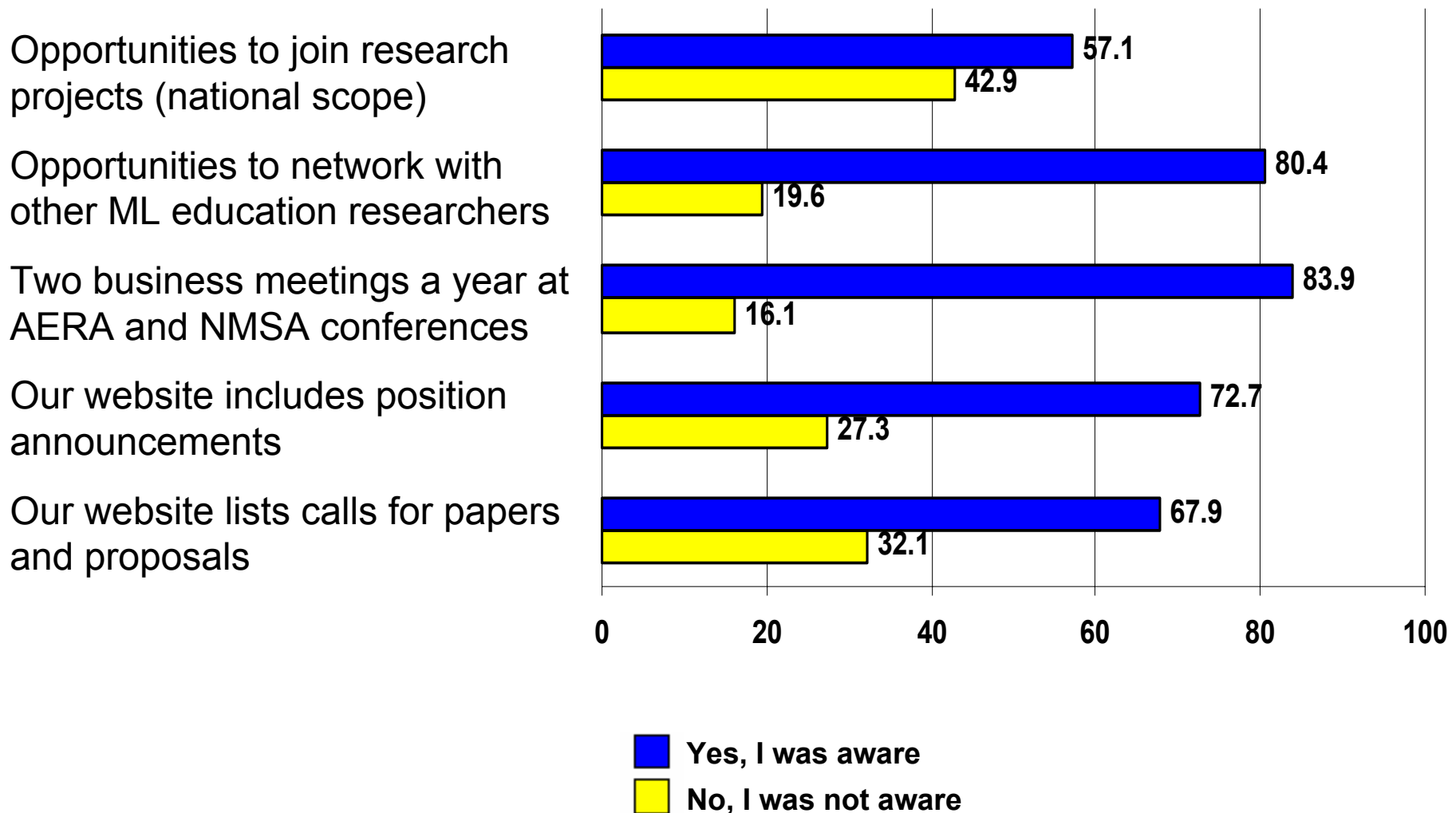


-  25 - I am very familiar with the activities of the MLER SIG
-  15 - I am familiar with some of the activities of the MLER SIG
-  9 - I am not familiar with the activities of the MLER SIG
-  6 - I only know of one or two of the MLER SIG

# Awareness of the benefits and opportunities of membership in MLER SIG



# Awareness of the benefits and opportunities of membership in MLER SIG



# Perceptions of the MLER SIG

## Levels of Agreement

	Agree % (#)	Disagree % (#)
<b>Opportunities for active participation in the MLER SIG.</b>	90.4 (47)	9.6 (5)
<b>Opportunities for collaboration within the MLER SIG.</b>	86.2 (44)	13.8 (7)
<b>Opportunities for leadership in the MLER SIG.</b>	82.4 (42)	17.6 (9)
<b>MLER SIG invites the participation of individuals regardless of age, ethnic background, or gender.</b>	96.2 (50)	3.8 (2)
<b>MLER SIG works effectively as an organization.</b>	86.3 (44)	13.7 (7)
<b>MLER SIG works well with other organizations.</b>	83.3 (40)	16.7 (7)



# **Ability of MLER SIG website to meet members' needs**

## **Positive Responses (n=19)**

*I think the website does a great job of bringing together resources--human and otherwise--related to middle grades education research. I find it to be a useful tool, and often give out the address.*

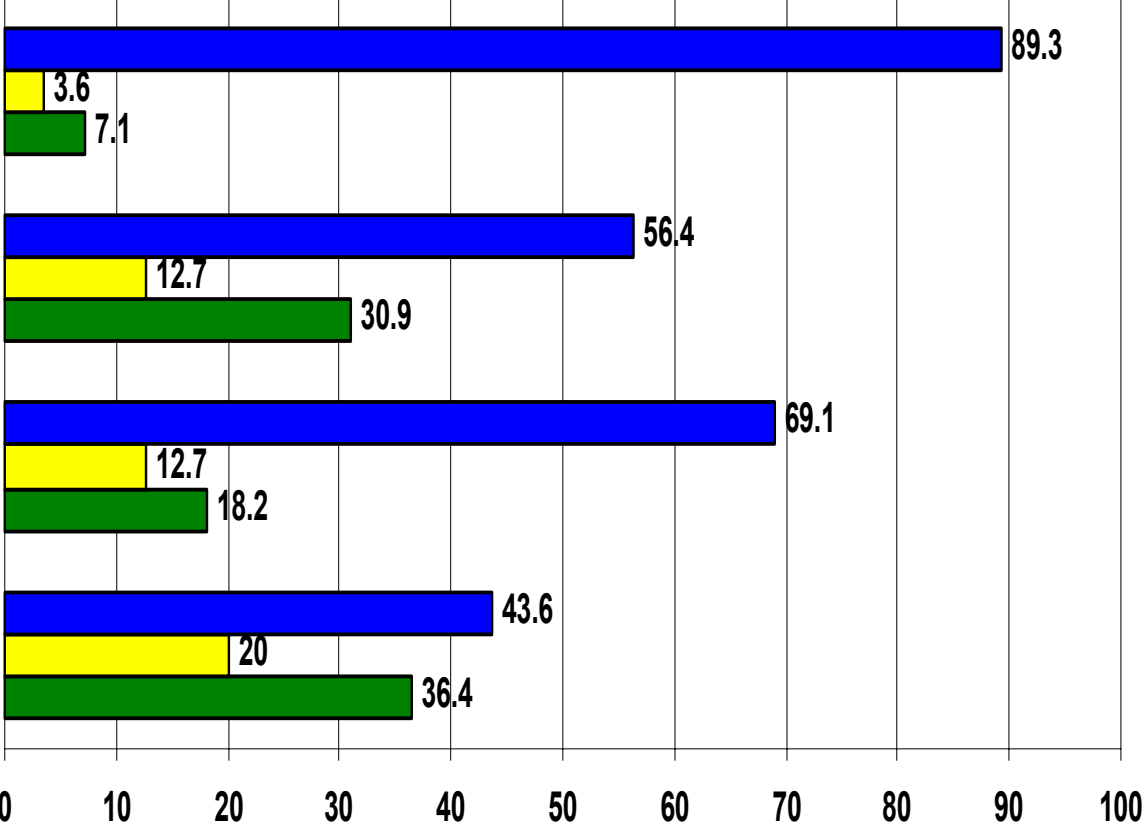
## **Negative Responses (n=3)**

*Not much information for new members. Had to navigate through the constitution to find information.*

## **Total Responses (n=22)**

# Participation in MLER Activities for the past few years

**Attended AERA meeting**



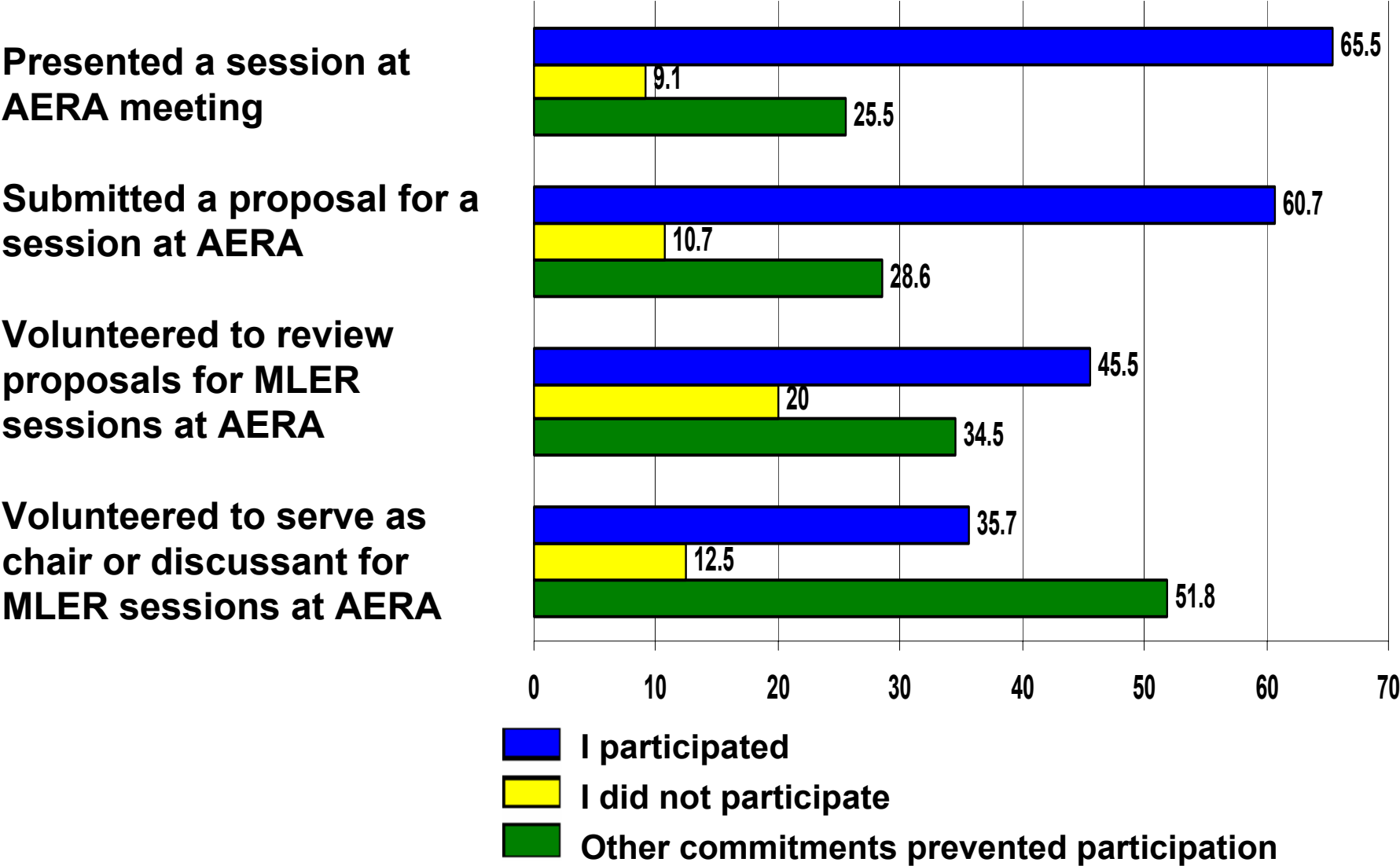
**Attended MLER business meeting at AERA**

**Attended NMSA conference**

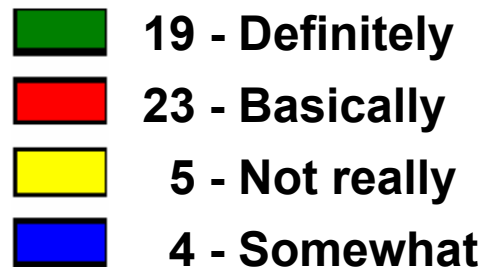
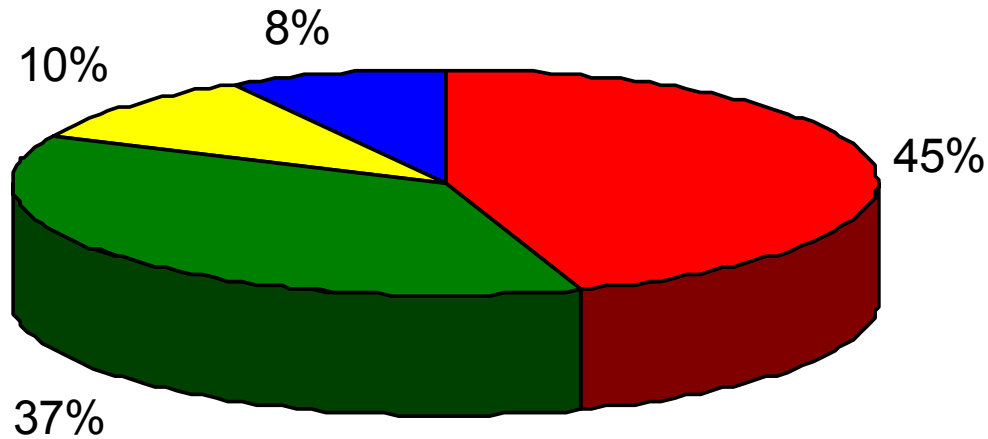
**Attended MLER business meeting at NMSA**



# Participation in MLER Activities for the past few years



# As an organization, is the MLER SIG meeting your needs?



# Changes to increase satisfaction with MLER

## Specific Changes for MLER (n=4)

- Additional awards
- Clarify proposal review process
- More communication and outreach  
*“Frequent informational updates”*

## Specific Changes for Members (n=6)

- Need to get more involved  
*“I probably need to be more proactive”*

## Unrelated to MLER (n=1)

## Total Responses (n=11)

# Recommendations: MLER Policy

## Specific suggestions (n=11)

- Graduate student on council, research collaboration, policy brief topics, peer-reviewed journal, advocacy, network with other organizations, additional awards, research focus

## Commendations (n=6)

*“I have been impressed with the support the SIG gives to graduate students conducting research.”*

## Neutral (n=2)

*“I don't feel qualified to respond...”*

## Critique (n=2)

*“We need to have higher standards for any research we are willing to endorse/support.”*

## Total Responses (n=24)

# **Recent Actions in Response to MLER Survey Findings**

- **Proposed amendments to the SIG Constitution and Bylaws to:**
  - **Include a graduate student on the association council**
  - **Clarify the responsibilities of SIG officers and councilors**
- **Identified ad hoc committees to lead the SIG's efforts to address strategic priorities, expand membership, add awards, and increase communication**